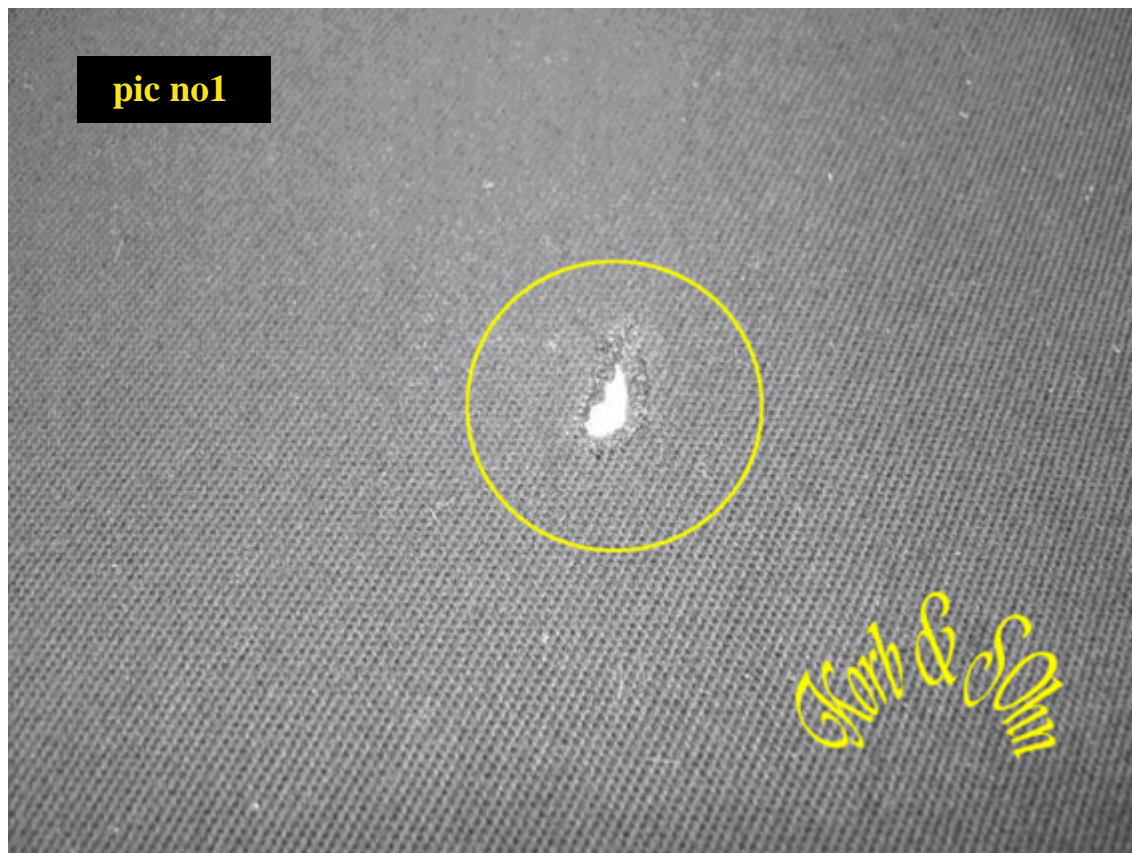


Repair an “burn hole”

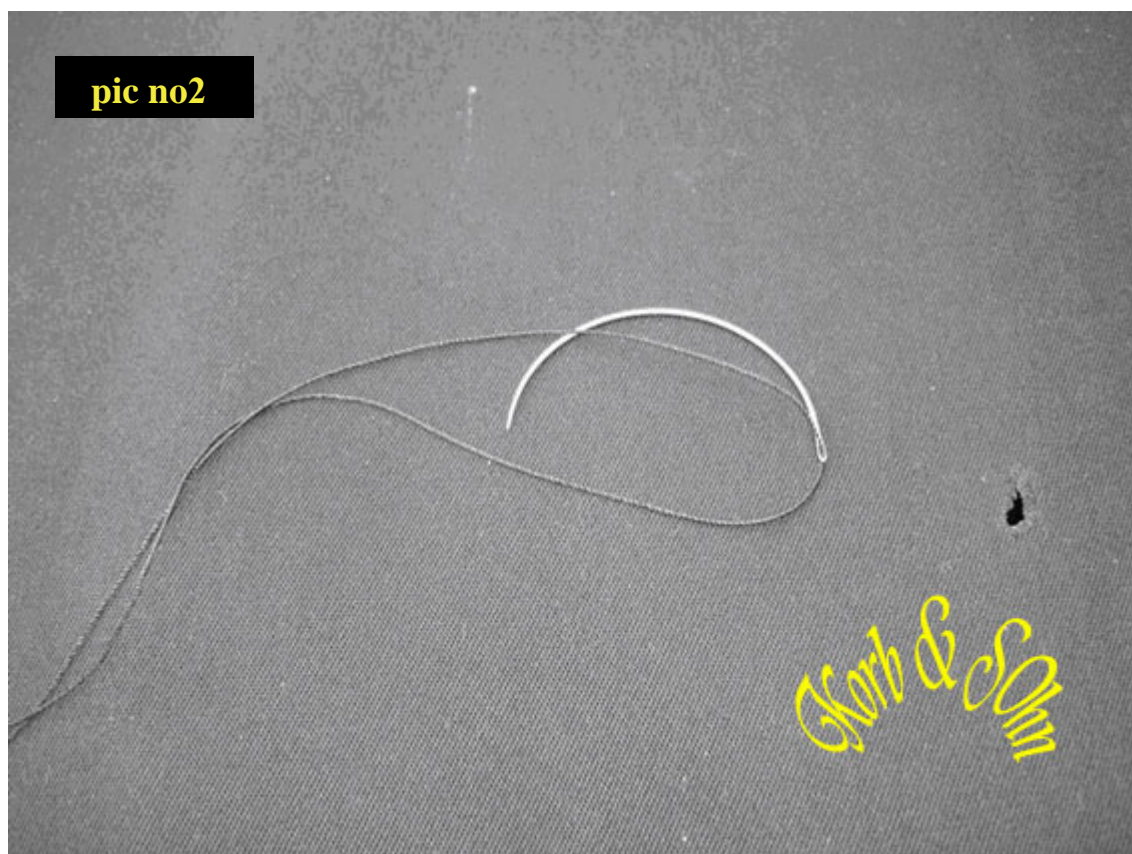
For this job it's better you have a Needle (curved is best), a thread, a razor blade, silicone and some of our patch.

NOTE that your rooftop got the be 100% dry.

In this picture you see a typical “burn hole” occurred by cigarette. (pic no1)



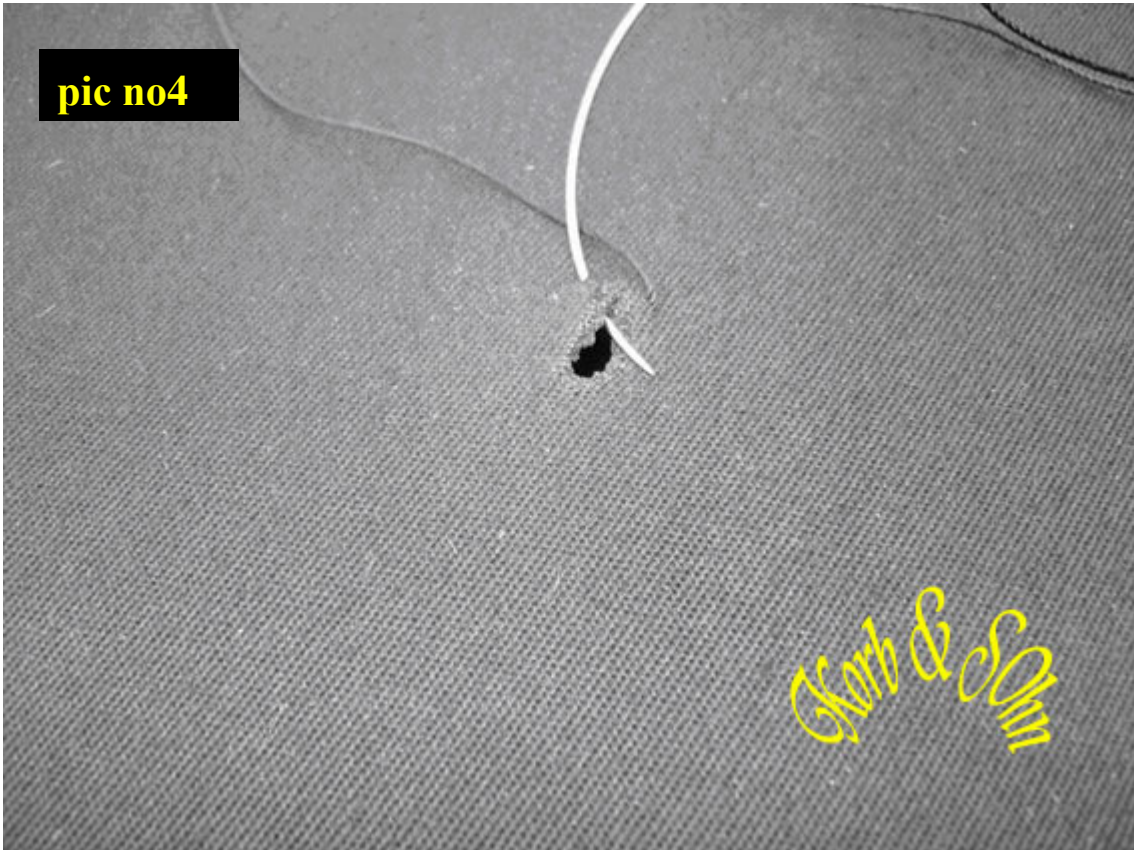
Now you need a synthetic thread (weatherproof) push it through the needle, tie the thread!



The next step is to push the needle from the unter- to the upperside of your roof (pic no3)



Keep on sewn (but now from the outer to the inner side). (pic no4)



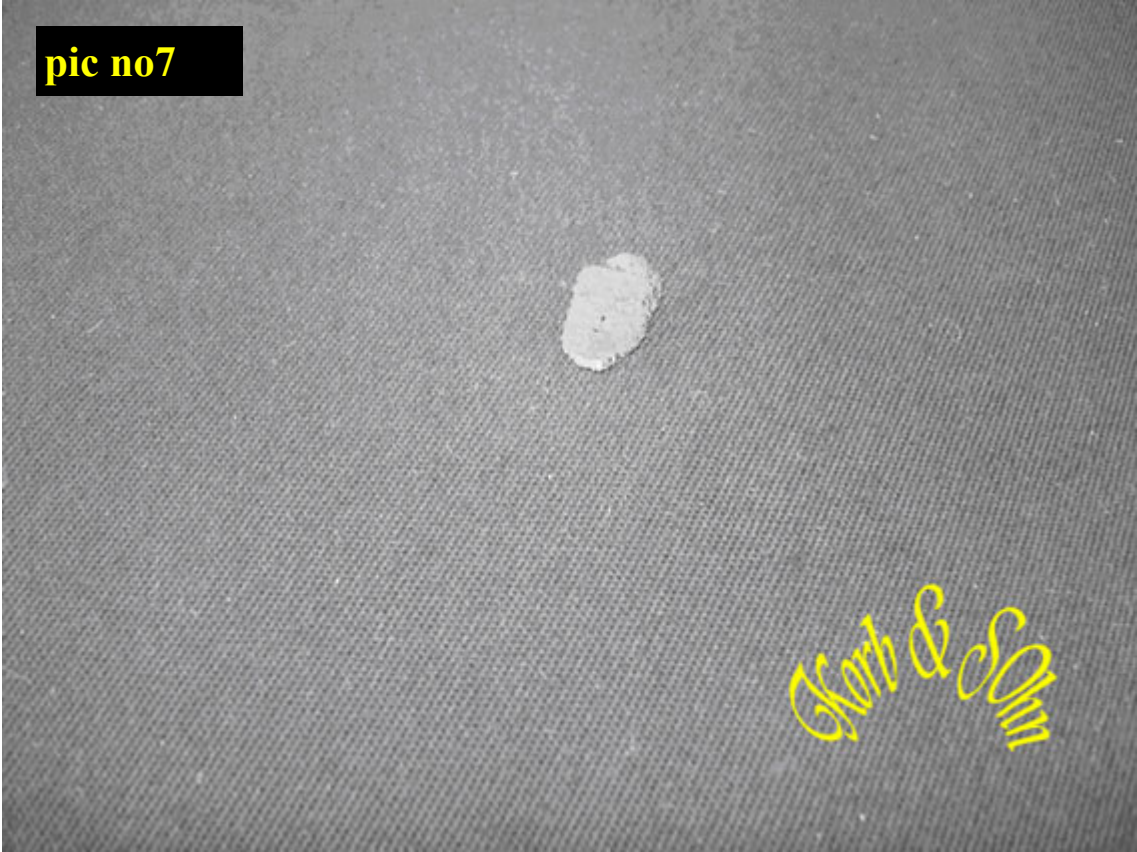
Finish sewing should look like this (pic no5)



Now you need an silicone or an enigne sealant. (pic no6)



Use it like written in „repair a cut“ and push it in(wet fingers first!) (pic no7)



Now you'll need the patch and the razorblade (pic no8)



Scrape with the razorblade a couple of fibers form the patch (pic no9)



This should be enough for our "brun hole"



Next you push the fibers into the fresh sealant.

Blow the rest of.

Now the hole is almost untraceable.

All instructions are just a guide.

Some time it's better to relate an expert.

At the last picture we marked the burn hole with the needles peak
(pic no11)

